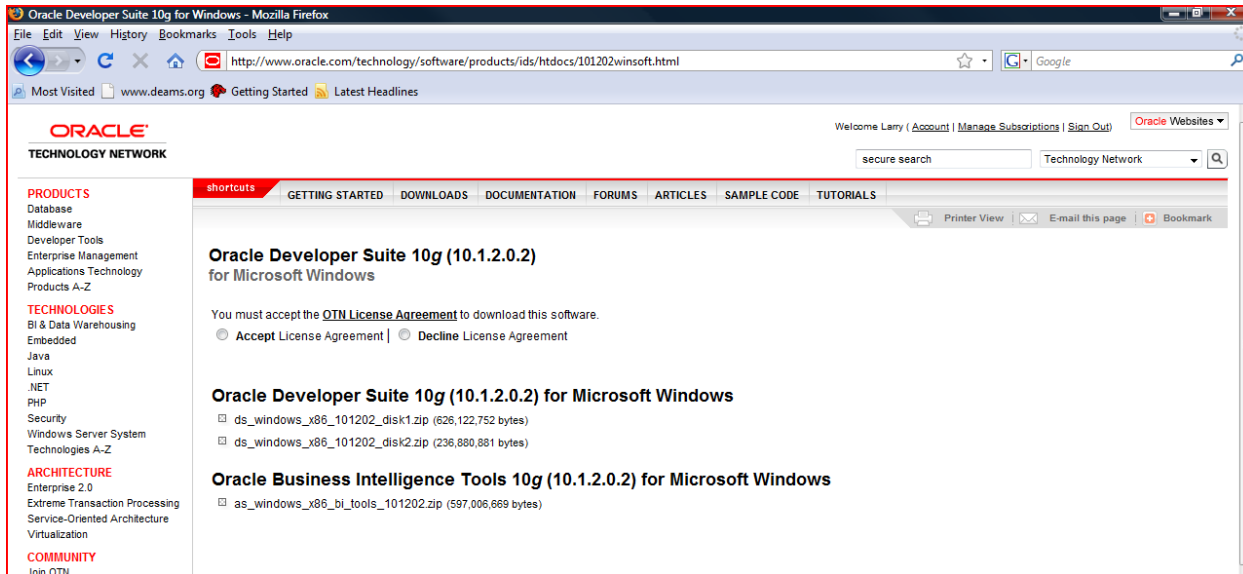


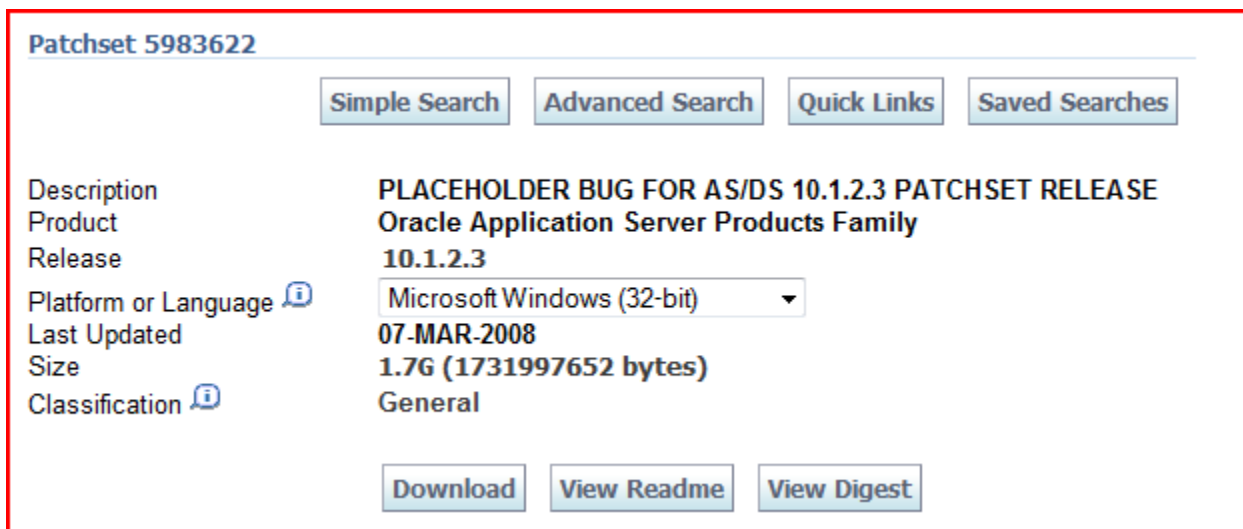
Installing Oracle Discoverer Administrator/Desktop 10g on Vista (updated June 1,2009)

Be sure to review and follow Metalink note # 564739.1 as part of this install!

Download the Oracle Business Intelligence Tools 10g (10.1.2.0.2) from OTN. (as_windows_x86_bi_tools_101202.zip)
(Note this is a 600 MB file to download).



Download patch 5983622 (Microsoft Windows (32-bit)) (Note this is a 1.7 GB file to download).



Download Patch 6153245 (Microsoft Windows Vista (32-bit)).

Patch 6153245

[Simple Search](#) [Advanced Search](#) [Quick Links](#) [Saved Searches](#)

Description

**MS VISTA-32BIT: INSTALL PATCH REQUIRED FOR 10.1.2.0.2 BI-IDS
INSTALL**

Product

Oracle Application Server Products Family

Release

10.1.2.0.2

Platform or Language

Microsoft Windows Vista (32-bit) ▼

Last Updated

22-FEB-2008

Size

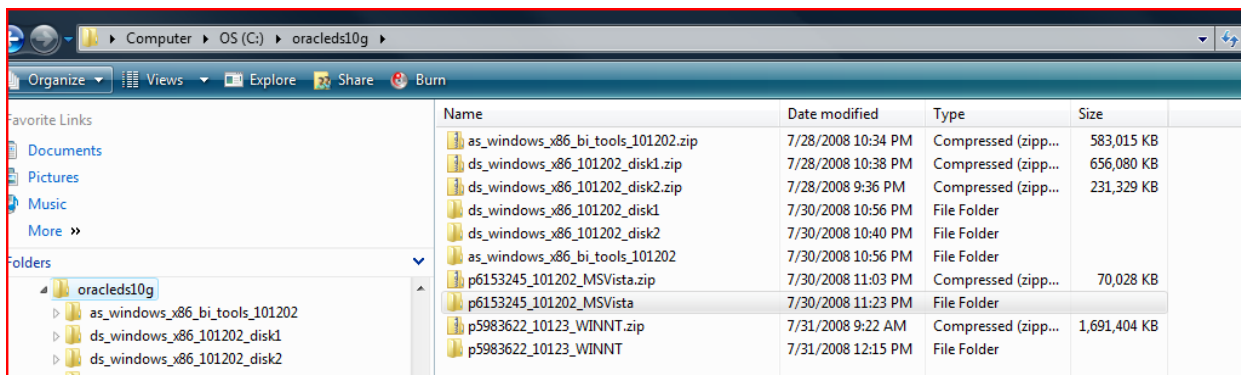
68M (71708094 bytes)

Classification

General

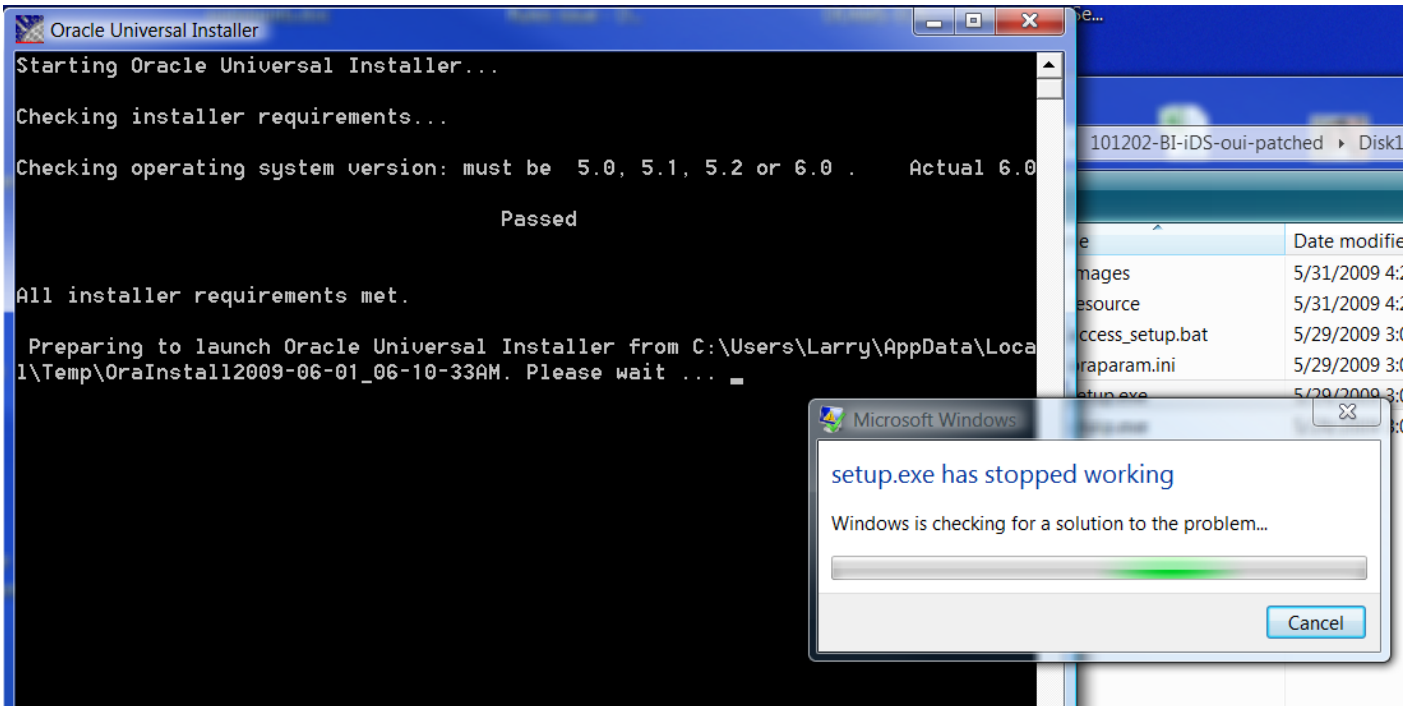
[Download](#) [View Readme](#) [View Digest](#)

Unzip the patches on the local drive (note this could take a while due to the file size).

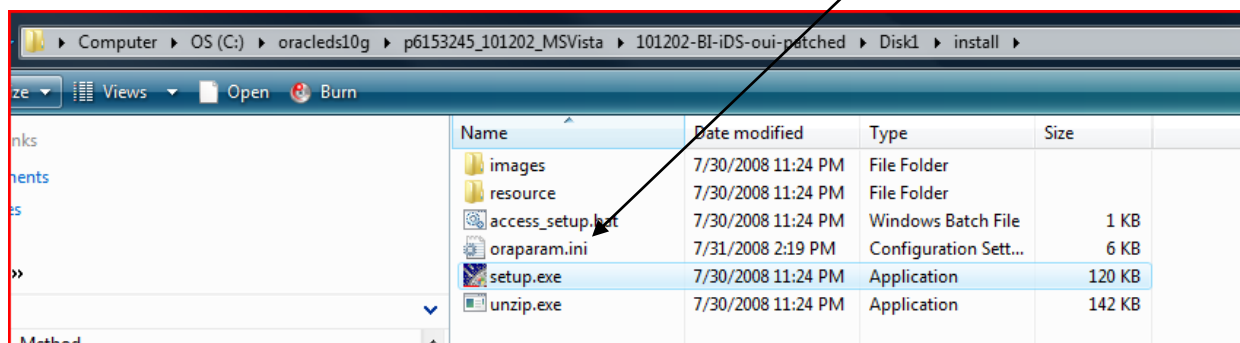


Note: I have noticed that when trying to install from a directory with a long path name, the install fails. I'm not exactly sure how long of a path name triggers the issue, but I have been successful unzipping to/installing from c:\oracleds10g and c:\oraclesoftware\BI Tools 10g. So I'd suggest creating a similar directory in the root c:\ and unzipping/installing from there.

Here's the issue I got when installing from a directory with a long path name:



Navigate to the directory where the patch 6153245 was unzipped. If the defaults were accepted during the unzip process, the directory is likely named: p6153245_101202_MS Vista. Edit the Patch_Location\101202-iDS-oui-patched\Disk1\install\oraparam.ini file.



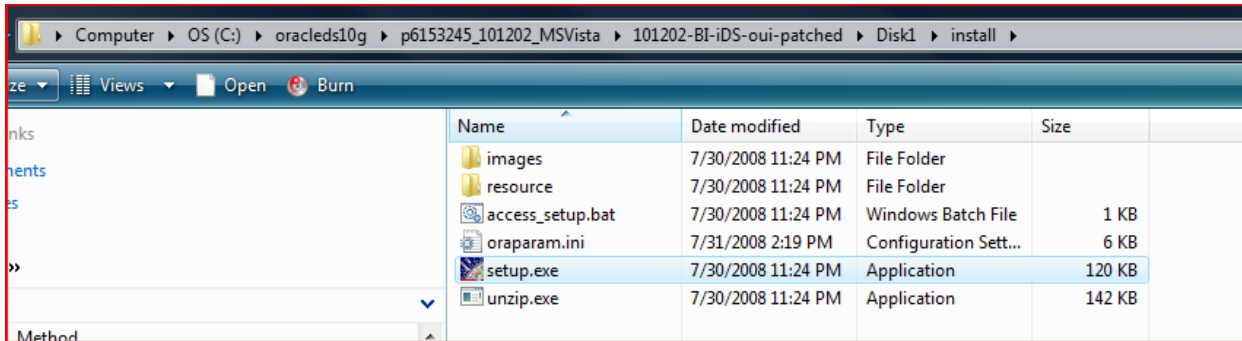
Add the parameter "SHOW_CUSTOM_TREE" under [oracle] section:

```
SHOW_CUSTOM_TREE=true
```

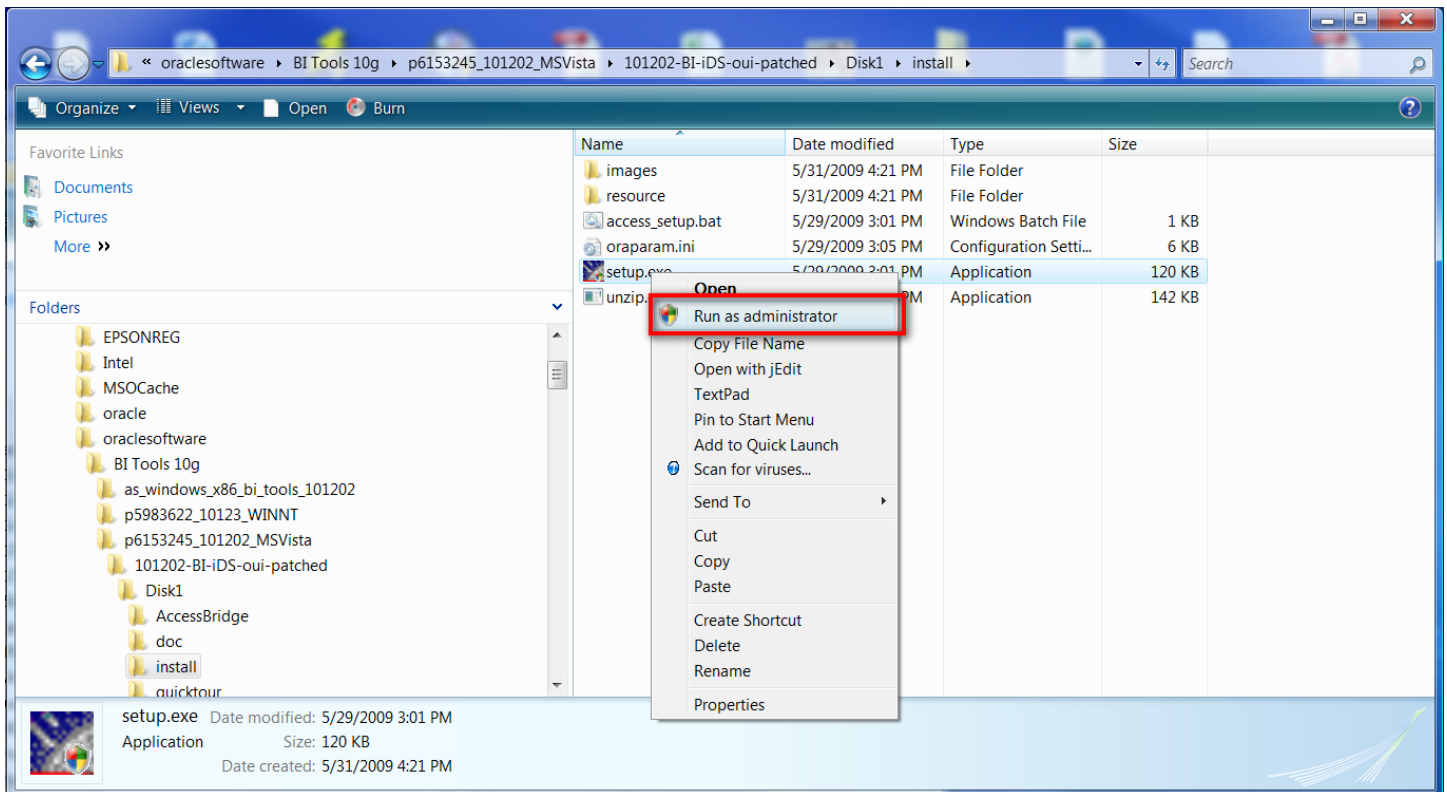
```
oraparam.ini
[Oracle]
DISTRIBUTION=TRUE
SOURCE=../stage/products.xml
LICENSE_LOCATION=
JRE_LOCATION=../stage/Component
JRE_MEMORY_OPTIONS="-mx160m"
DEFAULT_HOME_LOCATION=\oracle\
DEFAULT_HOME_NAME=BIToolsHome
NO_BROWSE=/net
NLS_ENABLED=TRUE
BOOTSTRAP=TRUE
BOOTSTRAP_SIZE=55
OUI_VERSION=10.1.0.4.0
## JRE_VERSION is only for Win
JRE_VERSION=1.4.2
DISPLAY_VERSION=false
USE_BUILD_NUMBER=false
#THIN_JDBC_FILENAME is optional
#The value specified for this
#be relative to <OUI expanded
THIN_JDBC_FILENAME=classes12.j
#JRE_OSDPARAM is to set OS dep
#JRE_OSDPARAM is optional and
#that support native VM ( main
#For JRE 1.4.1 this should be
#supported client/server. The
#that supports native VM
#Unix supporting native - JRE_
#Unix NOT supporting native an
JRE_OSDPARAM=""
#RUN_OUICA specifies the batch
#The script is ouica.bat for w
#If the value is not specified
RUN_OUICA=ouica.bat
EXCLUDE_JRE_COMP=oracle.swd.jr
INCLUDE_JDK_COMP=oracle.jdk.l
SHOW_CUSTOM_TREE=true
```

Oracle Installer Part I

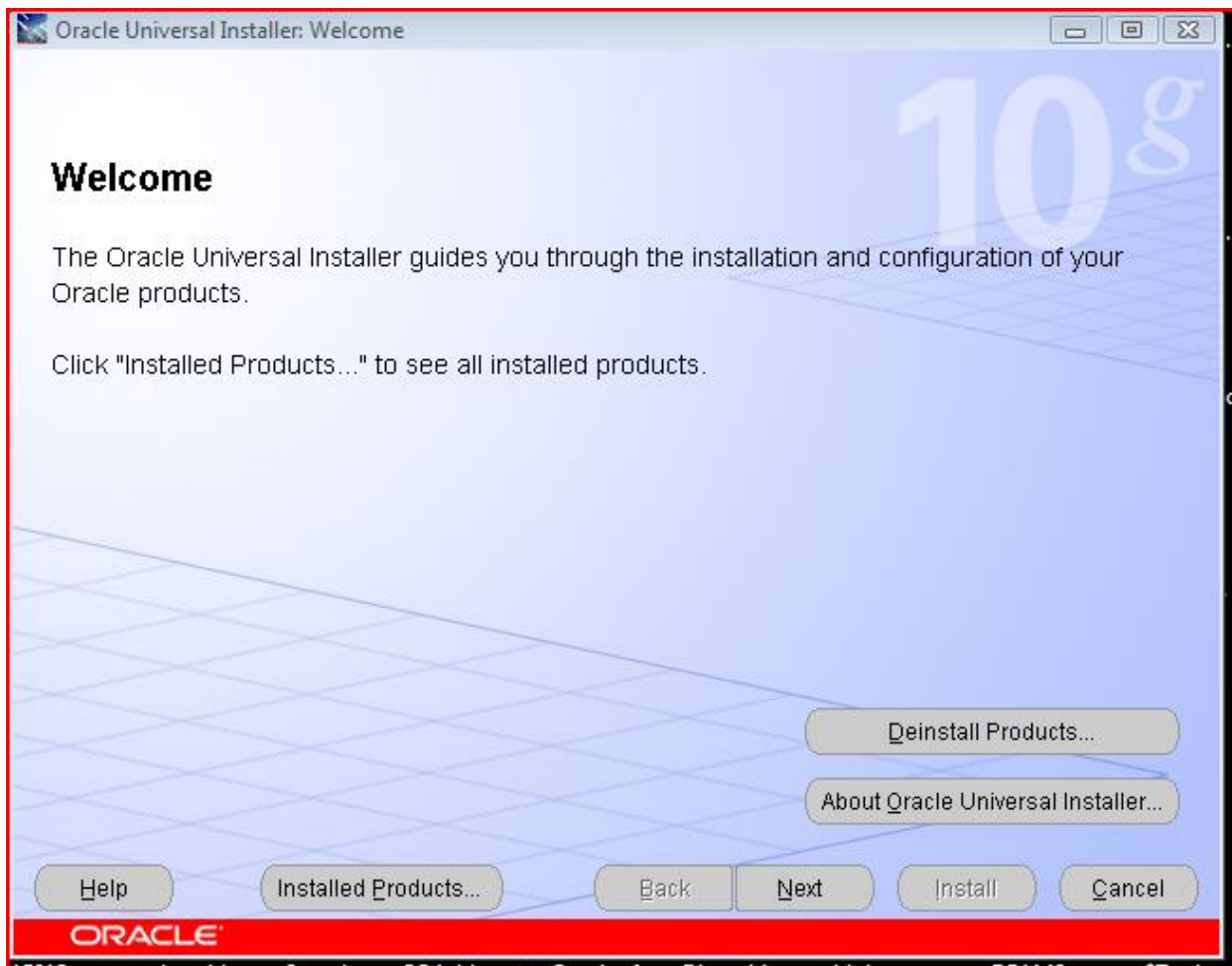
From the same directory with the oraparam.ini (where 6153245 was unzipped), run setup.exe to start the Oracle Installer.



Be sure to execute the setup.exe as Administrator.



The installer will execute, click Next.



When the installer prompts to specify the Source file location, **CHANGE IT to the path of where the as_windows_x86_bi_tools_101202.zip was unzipped to (this is the base 10.1.2.02)**. The full path should include \stage\products.xml. The default destination (BIToolsHome1) Name and Path are acceptable to leave as is.

Oracle Universal Installer: Specify File Locations

Specify File Locations

Source

Enter the full path of the file representing the product(s) you want to install:

Path:

Destination

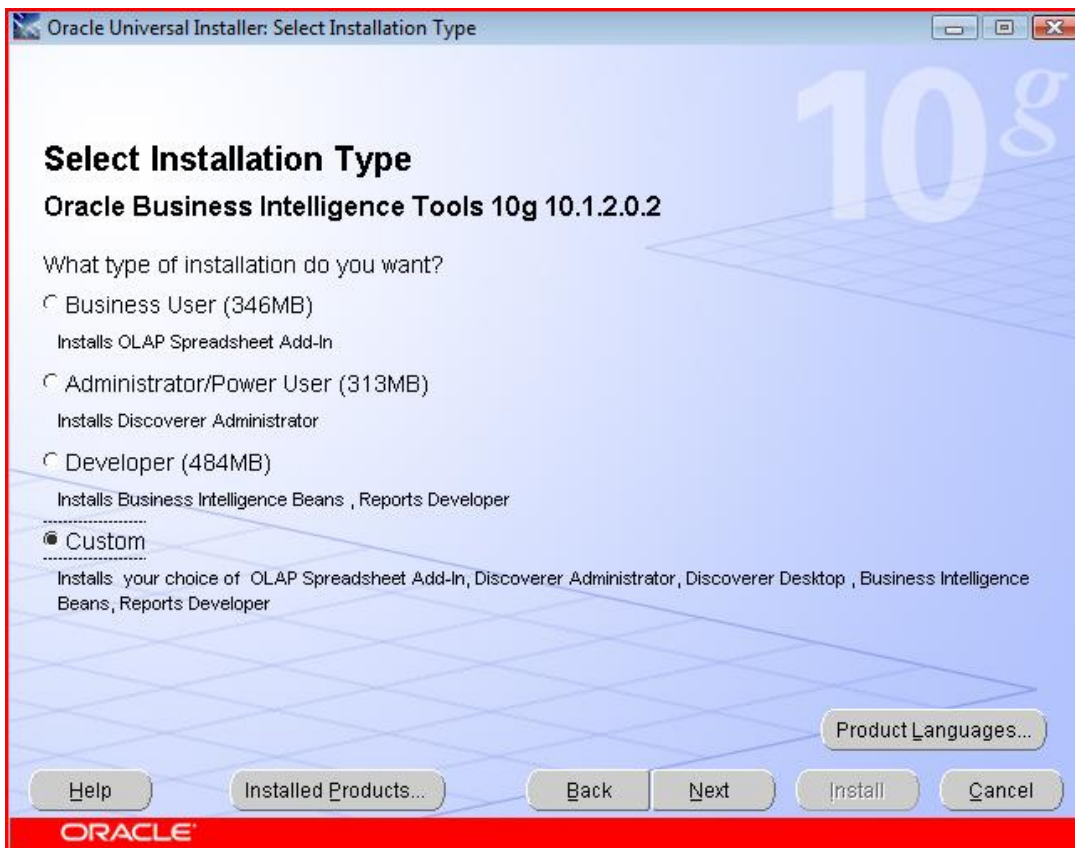
Enter or select a name for the installation and the full path where you want to install the product.

Name:

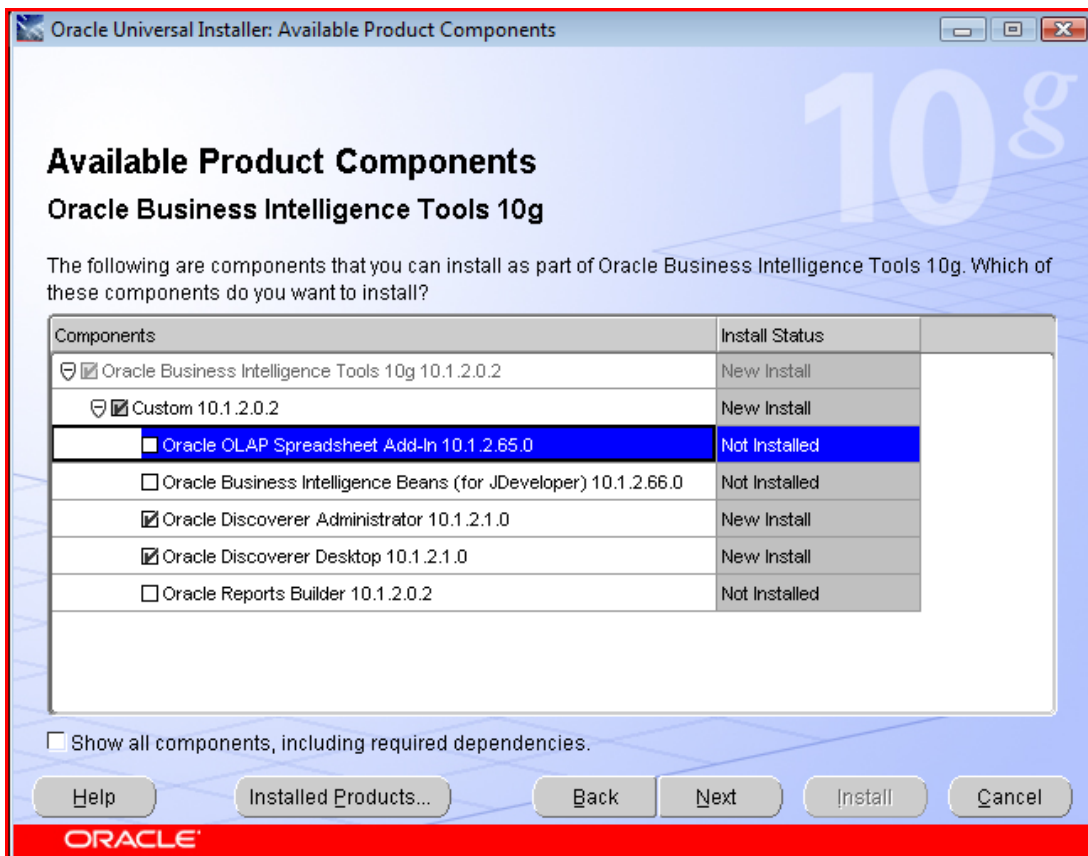
Path:

ORACLE

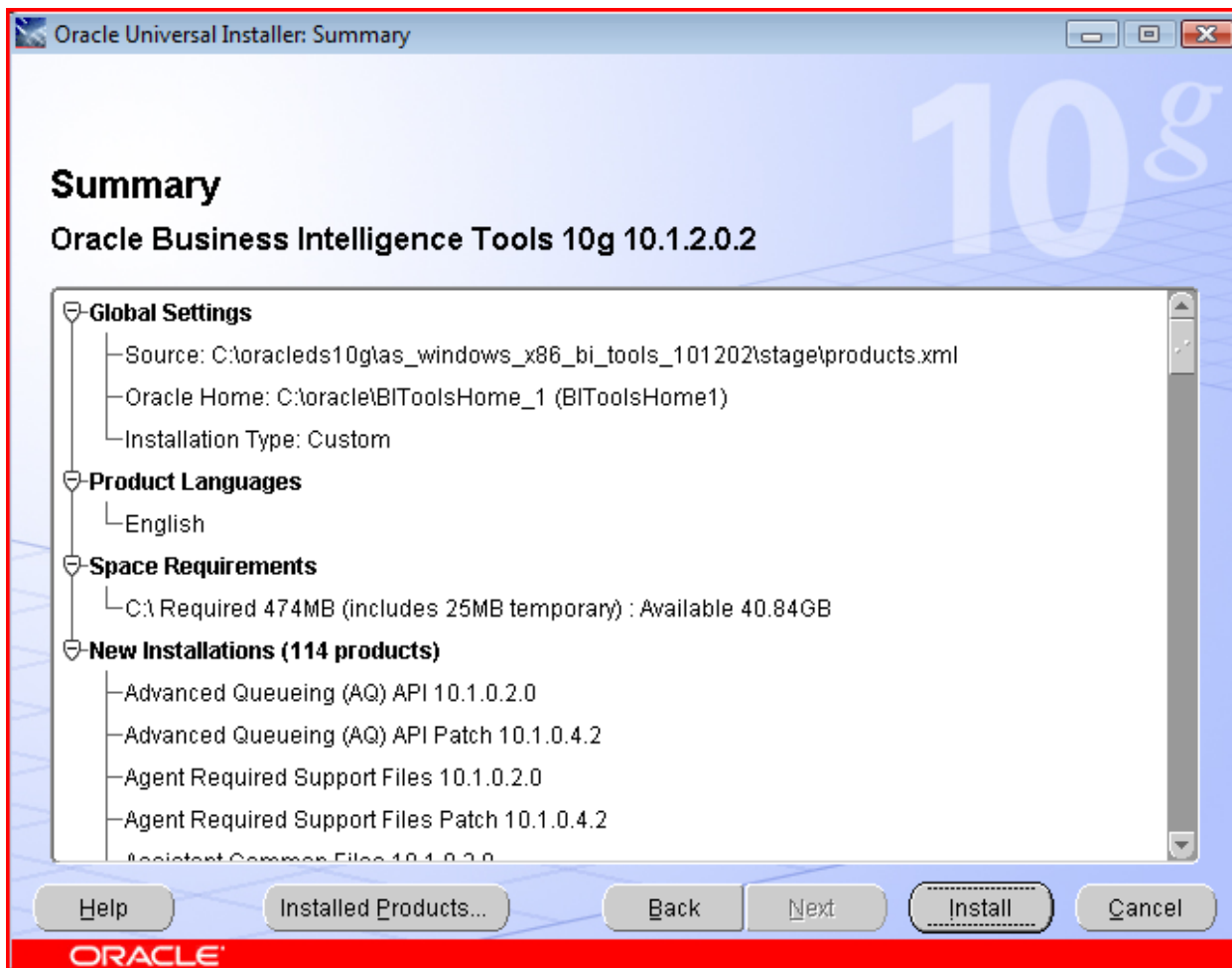
For Installation Type, select Custom, then Next.



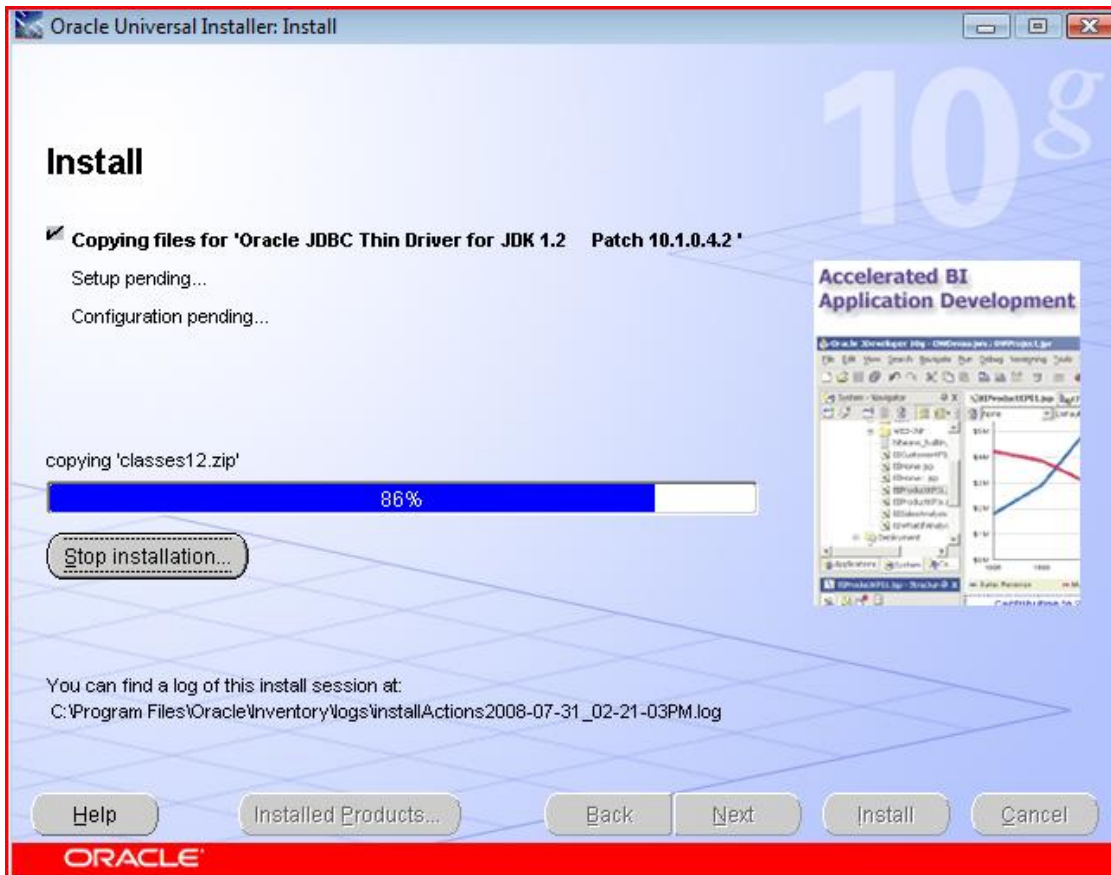
Deselect the components other than Discoverer Administrator and Discoverer Desktop. Click Next.



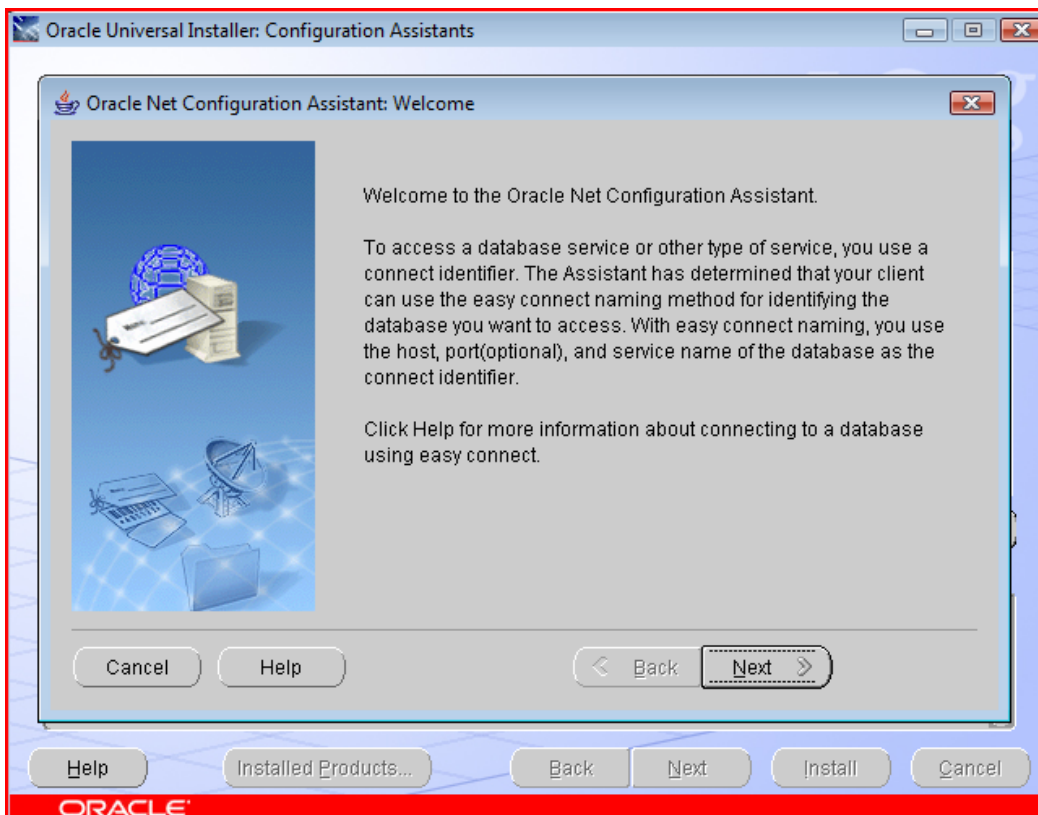
The following Summary will appear, click Install.



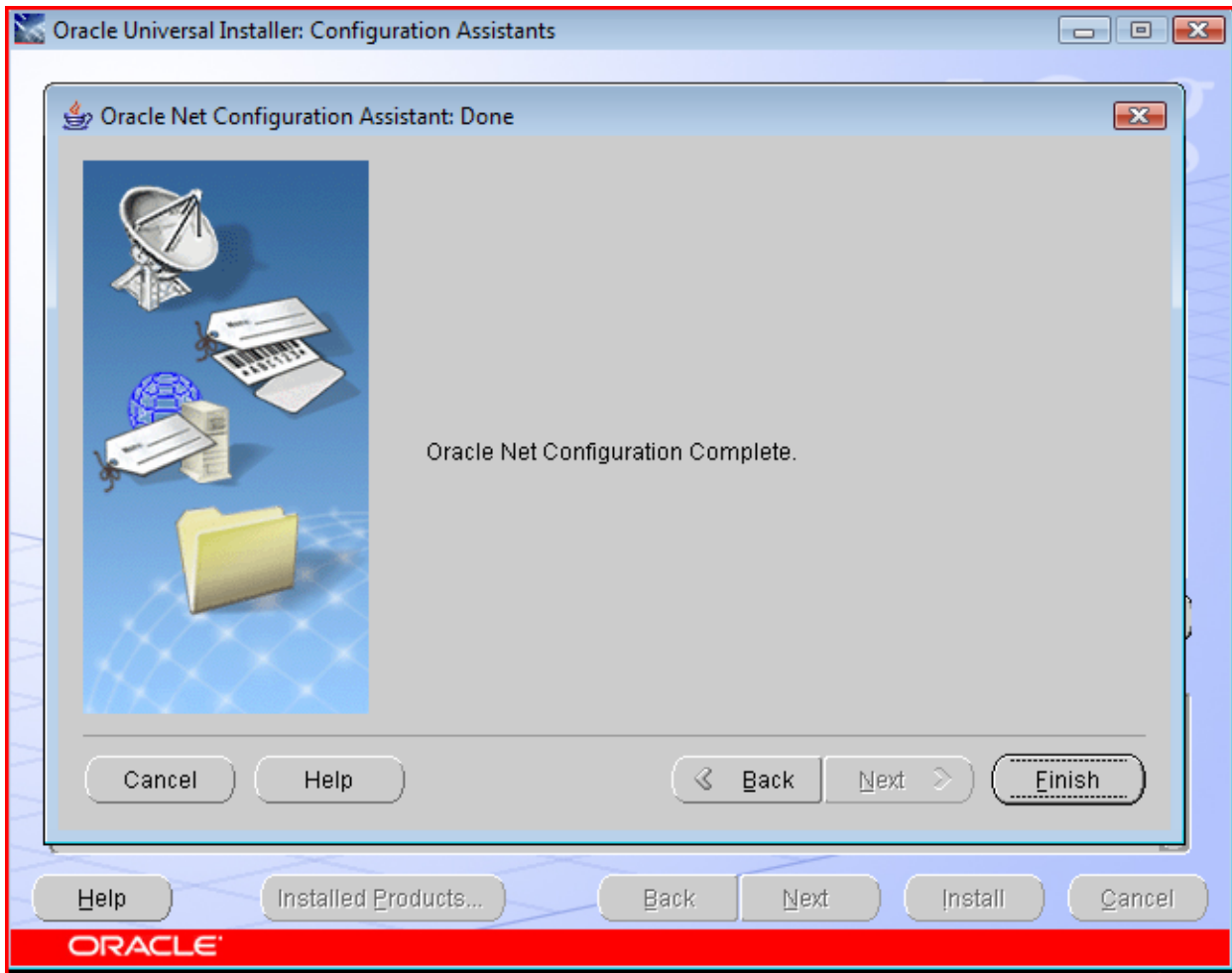
The installation process will execute.



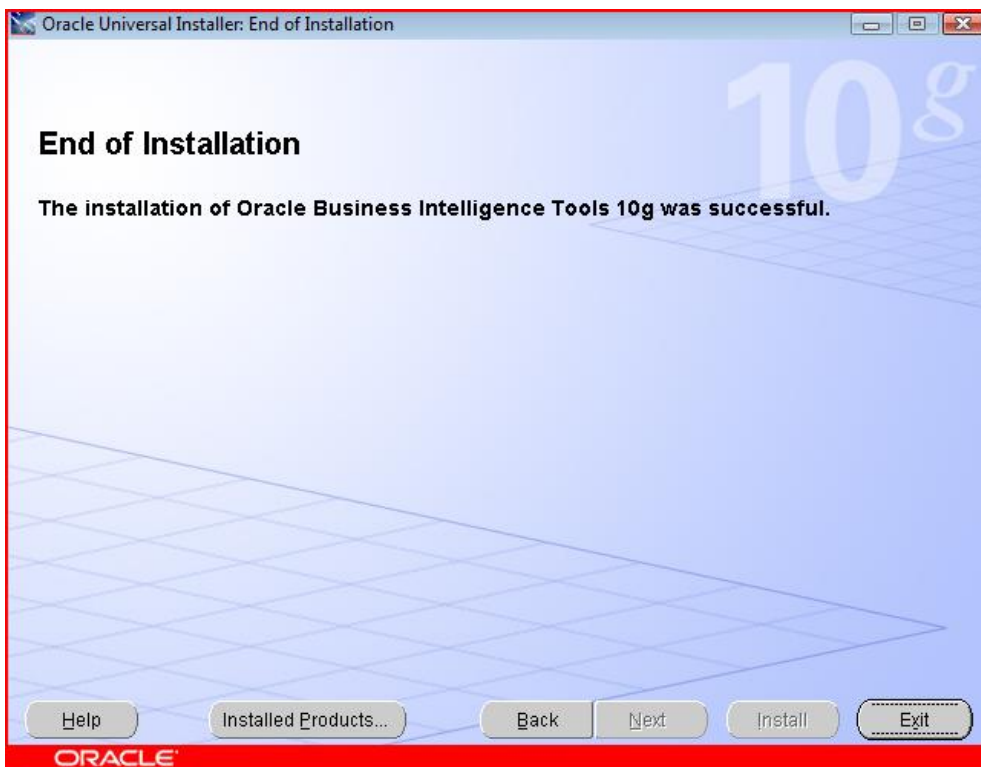
Upon installation completion, the following window will appear, click Next.



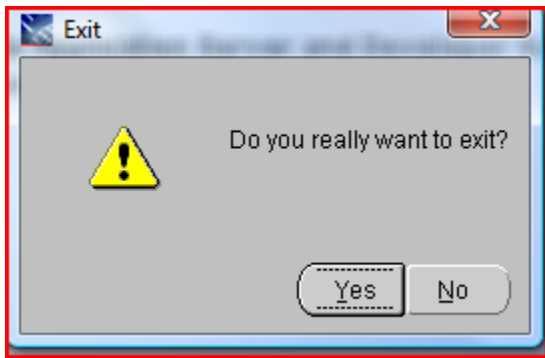
Click Finish.



Click Exit.



Click Yes.



The following web page will spawn.

Welcome - Mozilla Firefox

File Edit View History Bookmarks Tools Help

file:///C:/oracle/BIToolsHome_1/bi/welcome.html

Most Visited www.deams.org Getting Started Latest Headlines

ORACLE®

BUSINESS INTELLIGENCE

Welcome to Oracle Business Intelligence Tools 10g (10.1.2)

Overview

Oracle Business Intelligence Tools enable users to manage data, develop custom applications, create enterprise reports, and include data in spreadsheets. Administrators will be able to efficiently prepare relational data sources for use by Oracle Business Intelligence. Developers can rapidly develop custom applications against multidimensional (OLAP) data sources. Report authors can build high fidelity, enterprise reports to provide and distribute business information to all levels within and outside the organization in a scalable and secure environment. Business users will gain direct access to multidimensional data in Microsoft® Excel spreadsheets. With Oracle Business Intelligence Tools, users can implement systems that allow organizations to gain timely and accurate insight into operations, customers, and suppliers to increase profitability.

For an overview, start with the [Quick Tour](#) to learn about the Oracle Business Intelligence Tools components and what they can do for you.

Installing the Software

To install Oracle Business Intelligence Tools, see the [Oracle Business Intelligence Tools Installation Guide](#). It explains the system requirements, installation steps and post-installation tasks required to install and use Oracle Business Intelligence. Consult the [Release Notes](#) for late breaking information about the release.

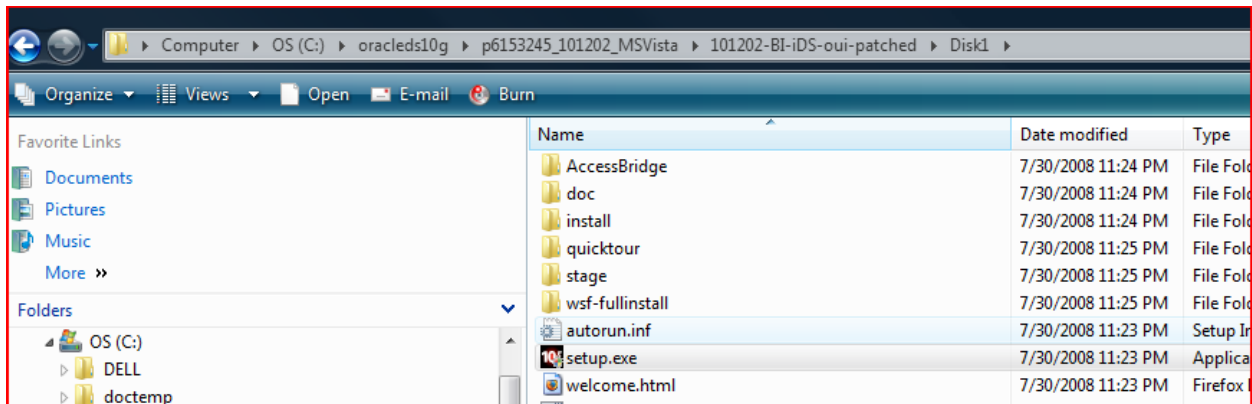
Getting Started

There are several ways to get started with Oracle Business Intelligence Tools. Documentation, Tutorials, and Samples provide instructions on how to use the key features of this release.

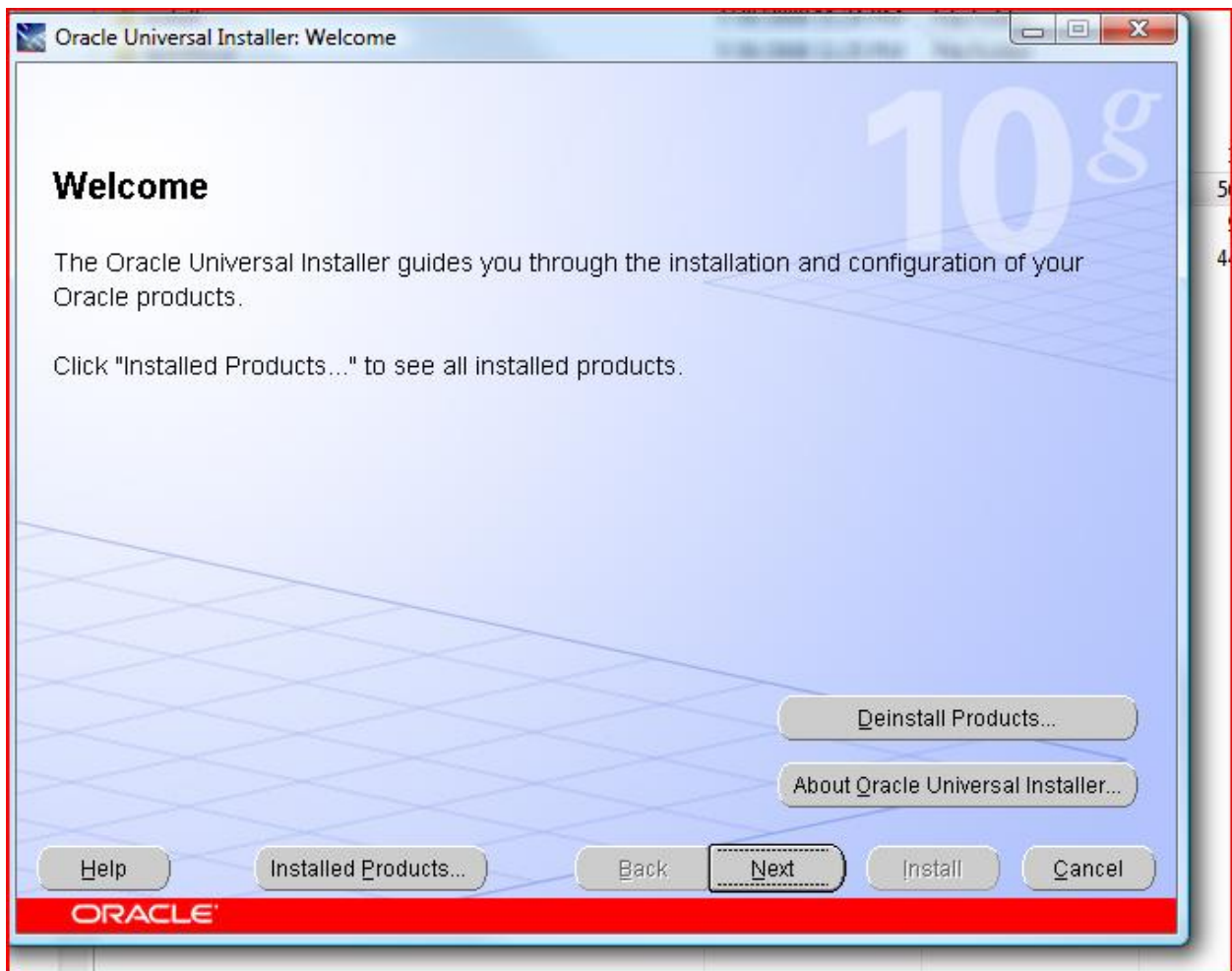
Oracle Business Intelligence Spreadsheet Add-in	Tutorials Samples
To use the Spreadsheet Add-In, start Microsoft® Excel and go to the OracleBI menu. The Spreadsheet Add-In works with data prepared for multidimensional analysis. See the the Installation Guide for more information on preparing your data or install the Spreadsheet Add-In Samples to work with a sample set of data.	
Oracle Business Intelligence Discoverer	Tutorials Samples Documentation

Oracle Installer Part II, installing the patch.

From the Disk 1 directory where 6153245 was unzipped, run setup.exe to start the Oracle Installer. Remember to '**Run as Administrator**'.



Click Next.



When the installer prompts to specify the Source file location, CHANGE IT to the path of where the p5983622_10123_WINNT.zip was unzipped to (this is the patch 5983622). The full path should include \stage\products.xml. Update the destination to be the same path as Part I was installed to. Note the default Name and Path will likely show as BIToolsHome2. Click Next.

Oracle Universal Installer: Specify File Locations

Specify File Locations

Source

Enter the full path of the file representing the product(s) you want to install:

Path:

Destination

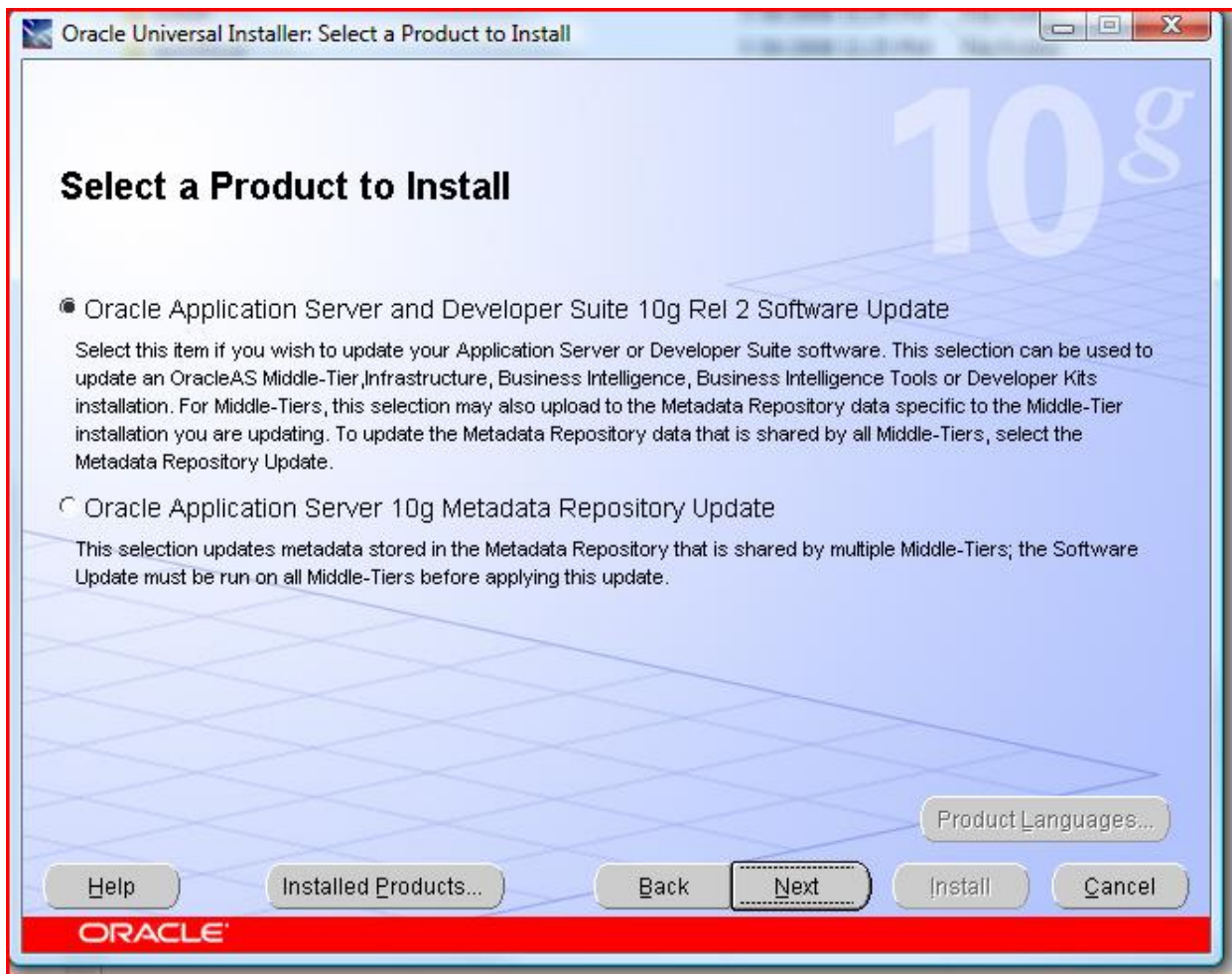
Enter or select a name for the installation and the full path where you want to install the product.

Name:

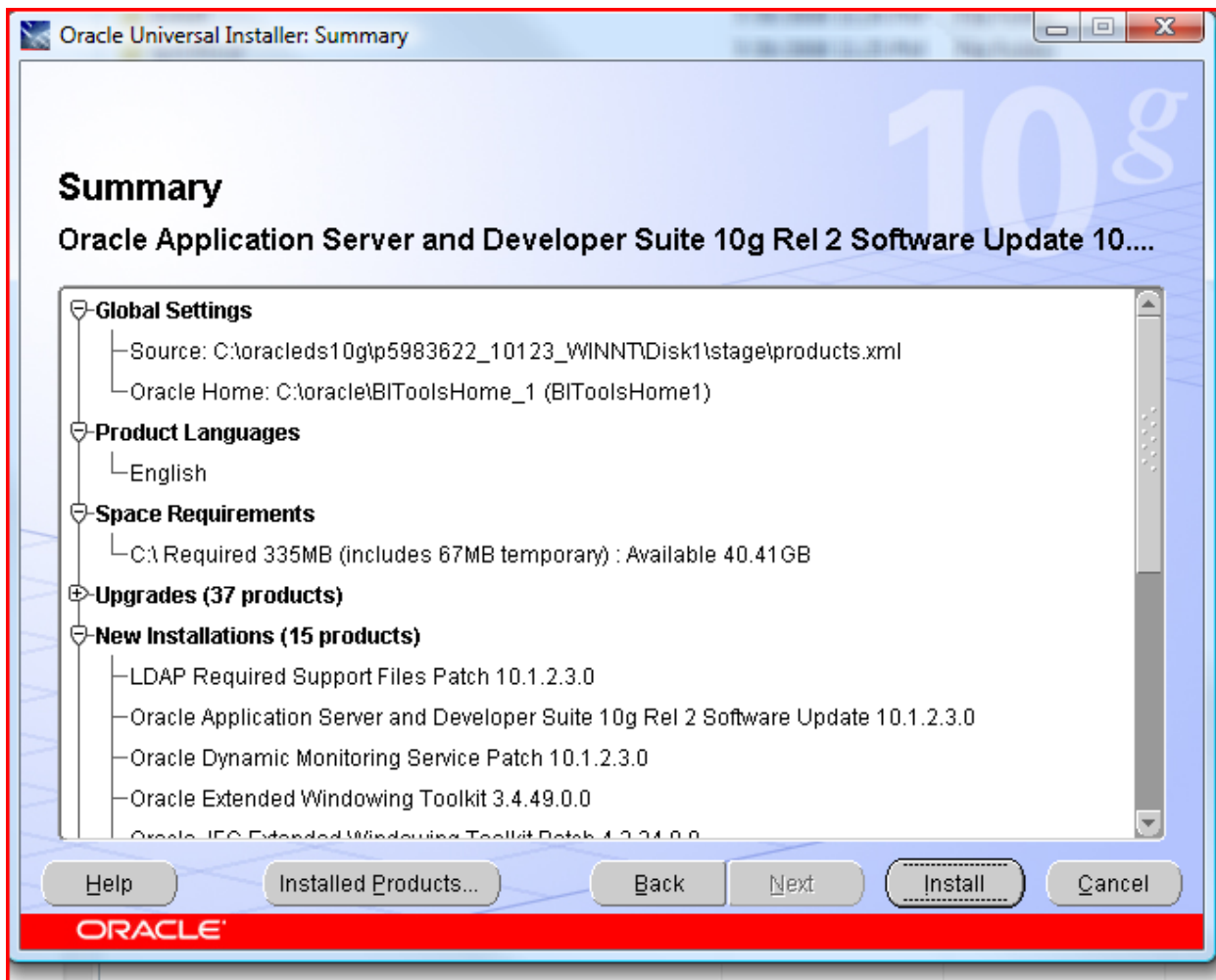
Path:

ORACLE

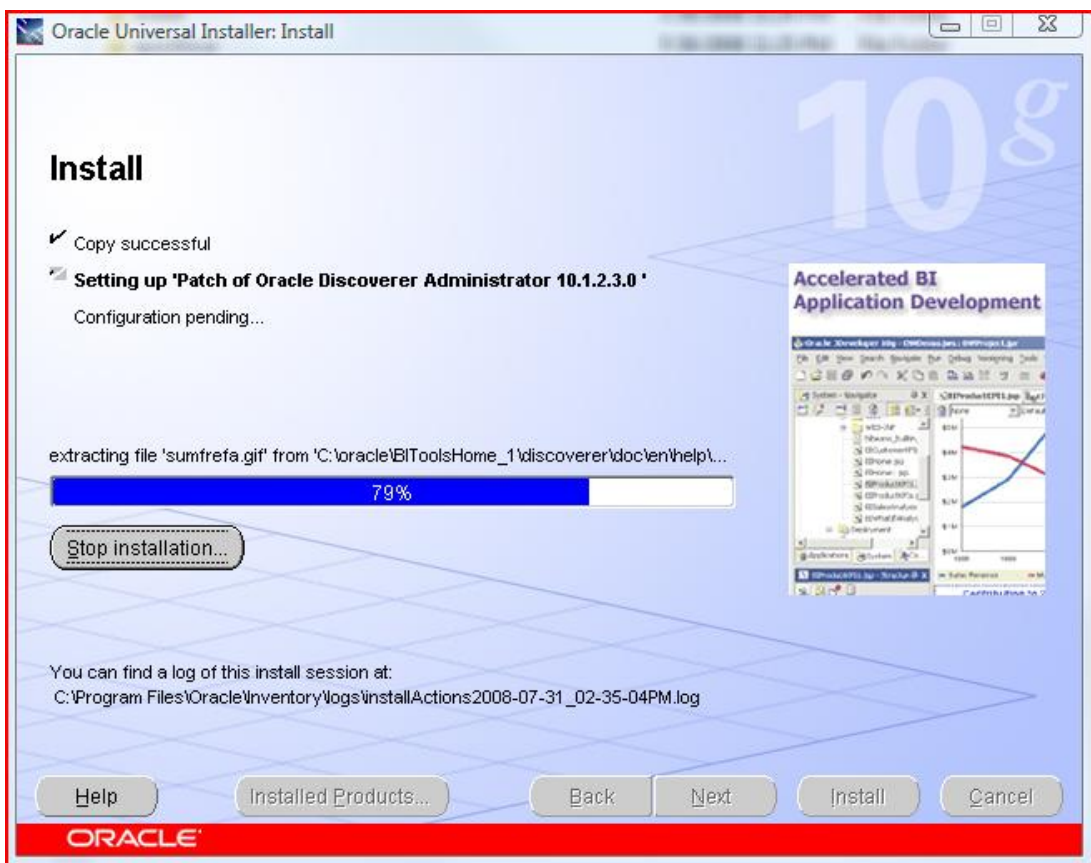
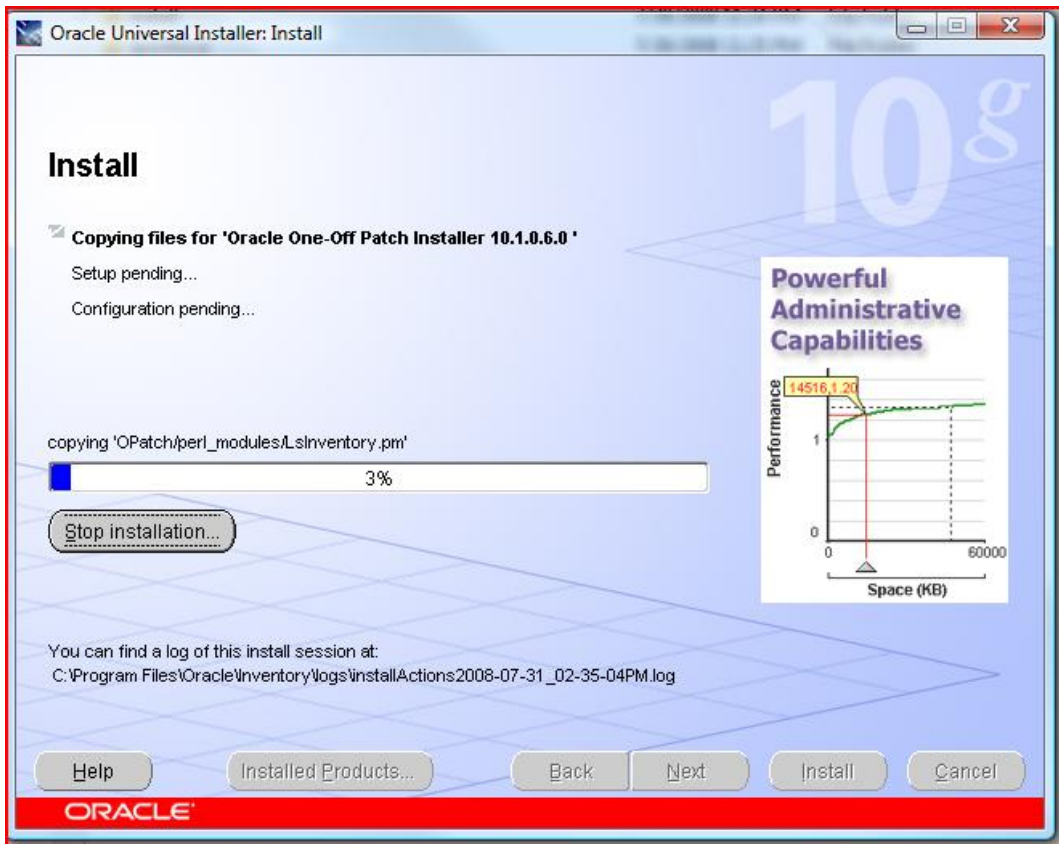
Select the Oracle Application Server and Developer Suite 10g Rel 2 Software Update option, click Next.



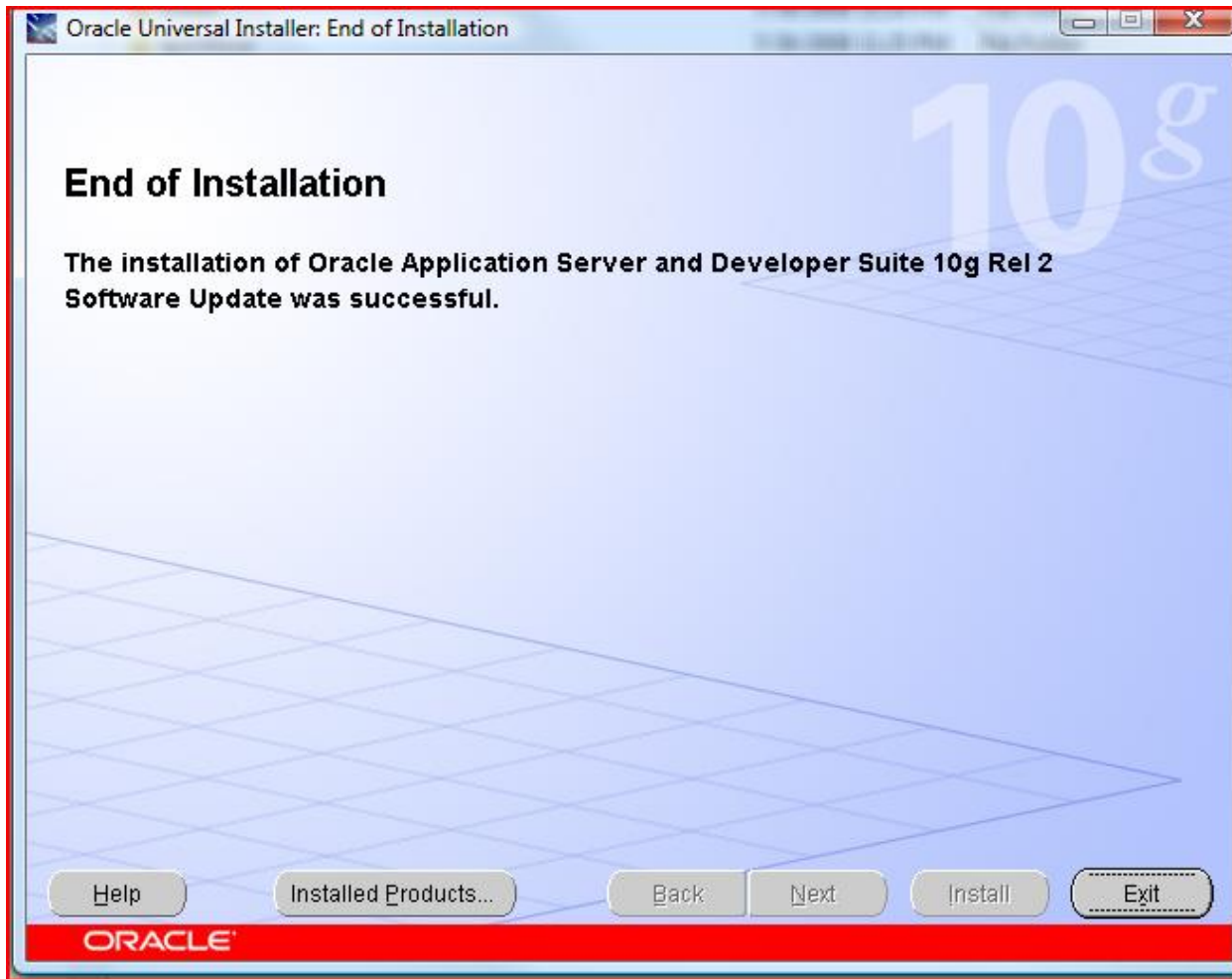
The summary window will appear, click Install.



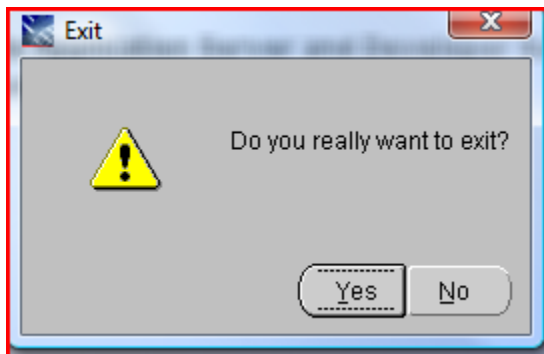
The install and configuration progress will be shown.



The Installation of the patch should complete. Click Exit.



Click Yes.



Discoverer should now be included in the start menu and should execute.

